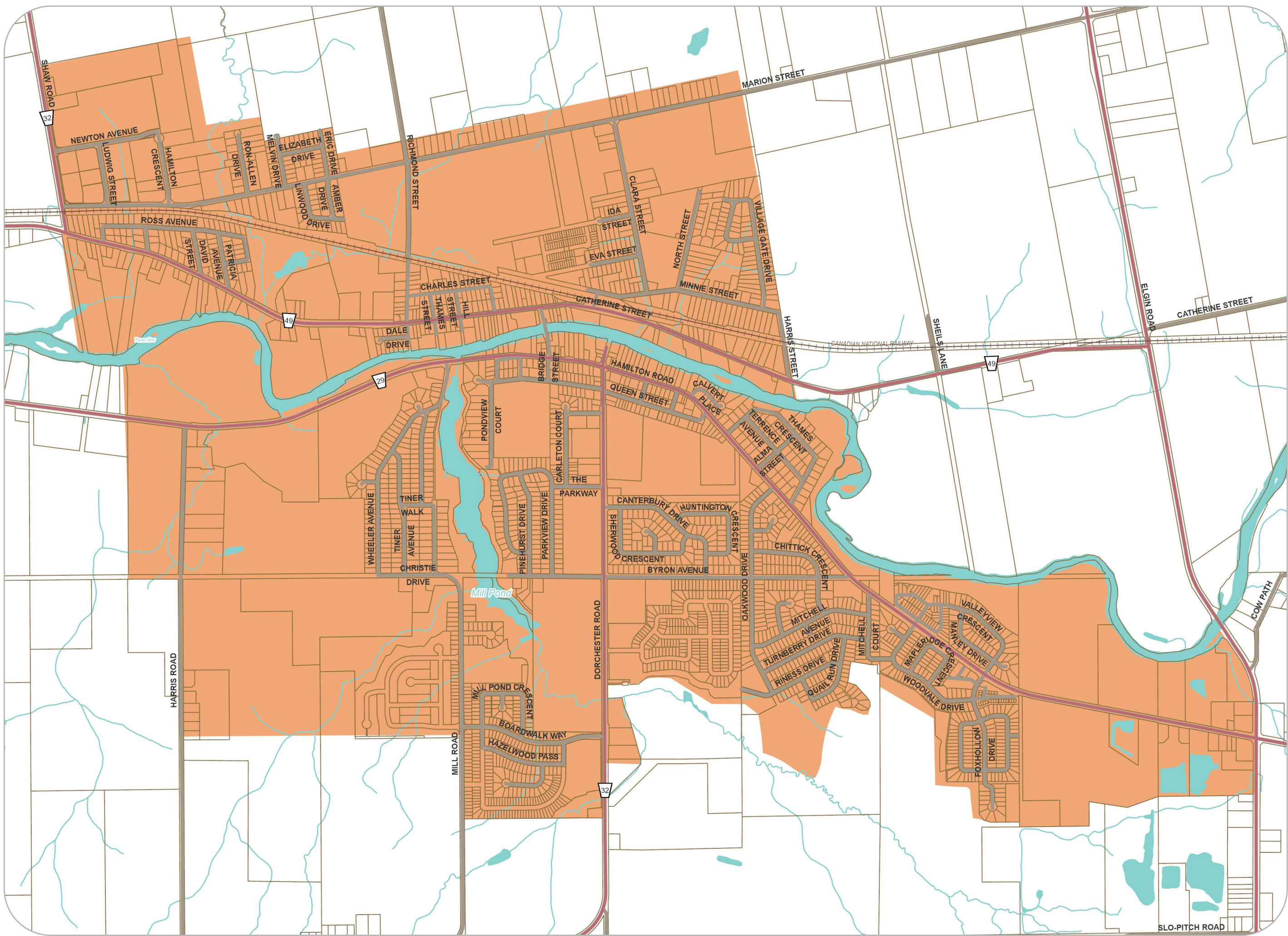


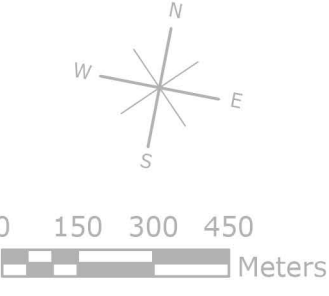
Village of Dorchester



LEGEND

-  COUNTY ROAD
-  LOCAL ROAD
-  WATERBODY
-  PARCELS
-  URBAN BOUNDARY

This map was created for general information purposes only, utilizing Municipality of Thames Centre and County of Middlesex data sources.



A north arrow is located in the bottom right corner, pointing North (N), South (S), East (E), and West (W). Below it is a scale bar showing distances of 0, 150, 300, and 450 meters.