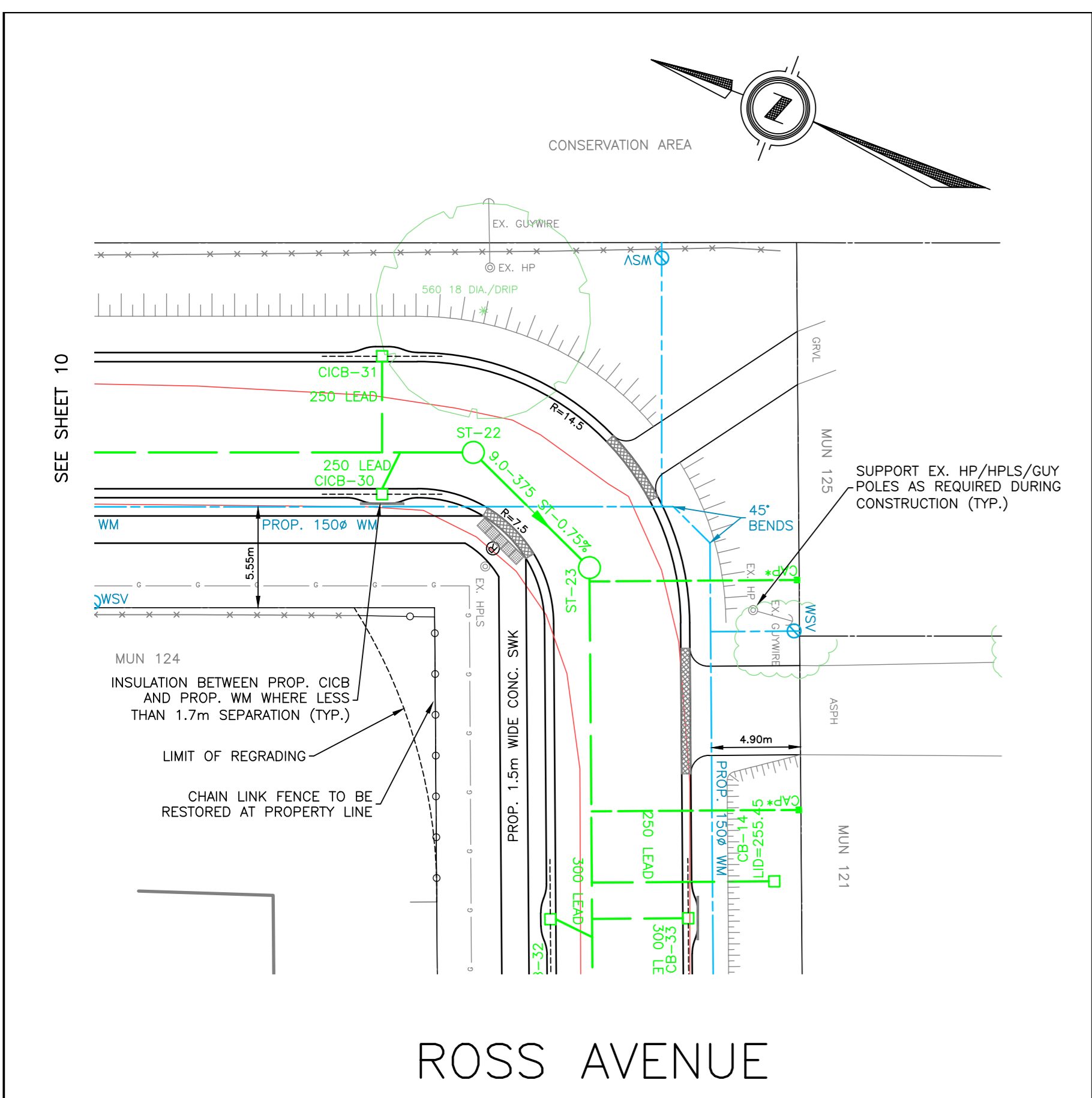
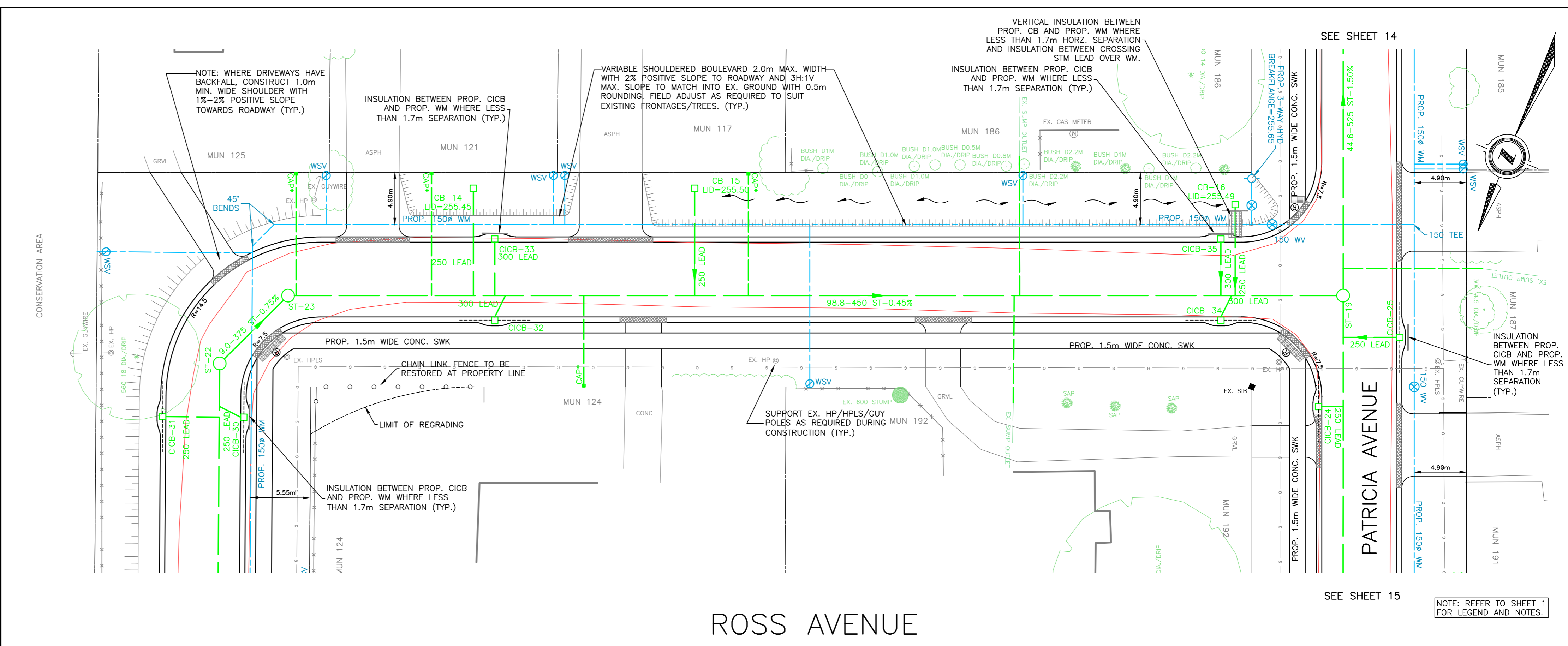


STATION	0+435.00	0+450.00	0+465.00	0+480.00	0+495.00	0+510.00	0+525.00	0+540.00	0+555.00	0+570.00	0+585.00	0+600.00	0+615.00	STATION												
EXISTING SERVICES																										
DRAWING #, SOURCE																										
DATE																										
AS CONSTRUCTED SERVICES																										
COMPLETION																										
DETAILS	<table border="1"> <tr> <th>No.</th> <th>REVISIONS</th> <th>DATE</th> <th>CONSULTANT</th> </tr> <tr> <td>1</td> <td>50% SUBMISSION</td> <td>MAY 1/20</td> <td>DEVENG</td> </tr> <tr> <td>2</td> <td>ECA SUBMISSION</td> <td>DEC 8/20</td> <td>DEVENG</td> </tr> </table>														No.	REVISIONS	DATE	CONSULTANT	1	50% SUBMISSION	MAY 1/20	DEVENG	2	ECA SUBMISSION	DEC 8/20	DEVENG
No.	REVISIONS	DATE	CONSULTANT																							
1	50% SUBMISSION	MAY 1/20	DEVENG																							
2	ECA SUBMISSION	DEC 8/20	DEVENG																							
CONSULTANT OR DIVISION	London Office 41 Adelaide St. N., Unit 71 (519) 672-8310  Paris Office 31 Mechanic St., Unit 301 (519) 442-1441																									
ENGINEER'S STAMP																										
SCALE	HORIZONTAL - 1:250 2.5 0 5m VERTICAL - 1:50 0.5 0 1m																									
TITLE	PORTER SUBDIVISION WATERMAIN REPLACEMENT AND ROAD RECONSTRUCTION, DORCHESTER, ON  PROPOSED CONSTRUCTION ROSS AVENUE: FROM 40m WEST OF DAVID STREET TO 45m EAST OF PATRICIA AVENUE																									
PROJECT No.	DEL20-003A																									
SHEET No.	9																									
PLAN FILE No.																										

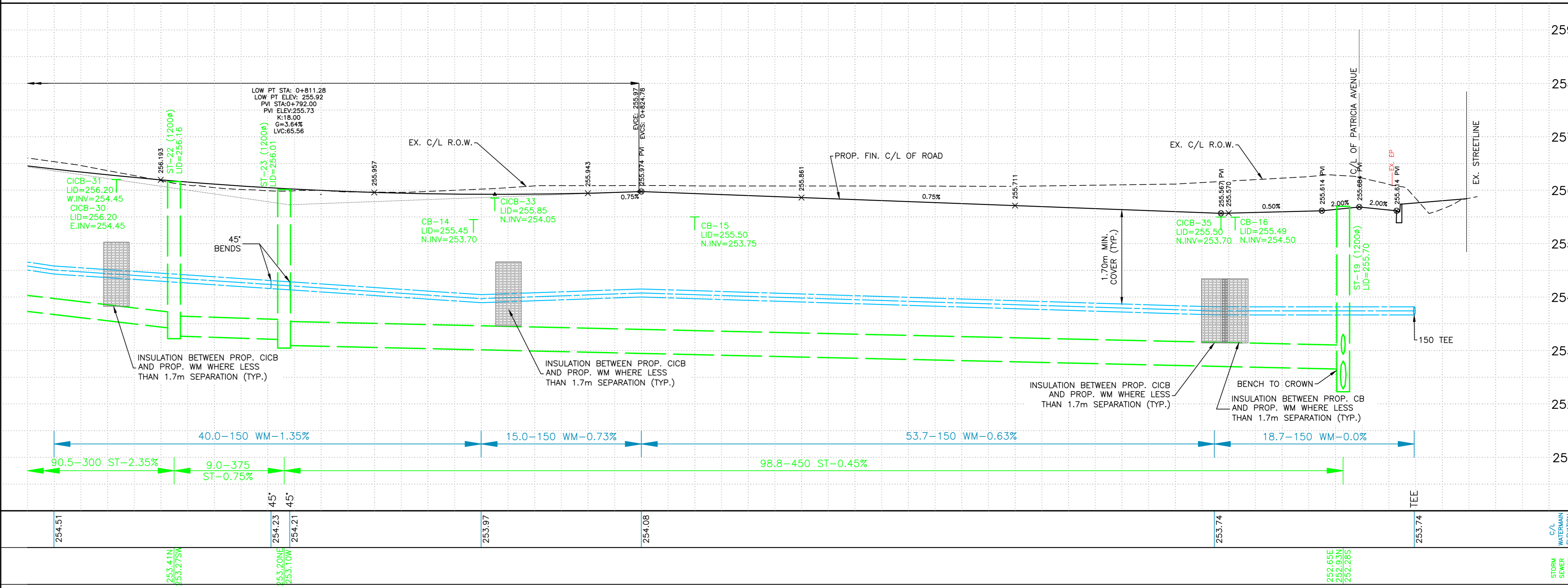
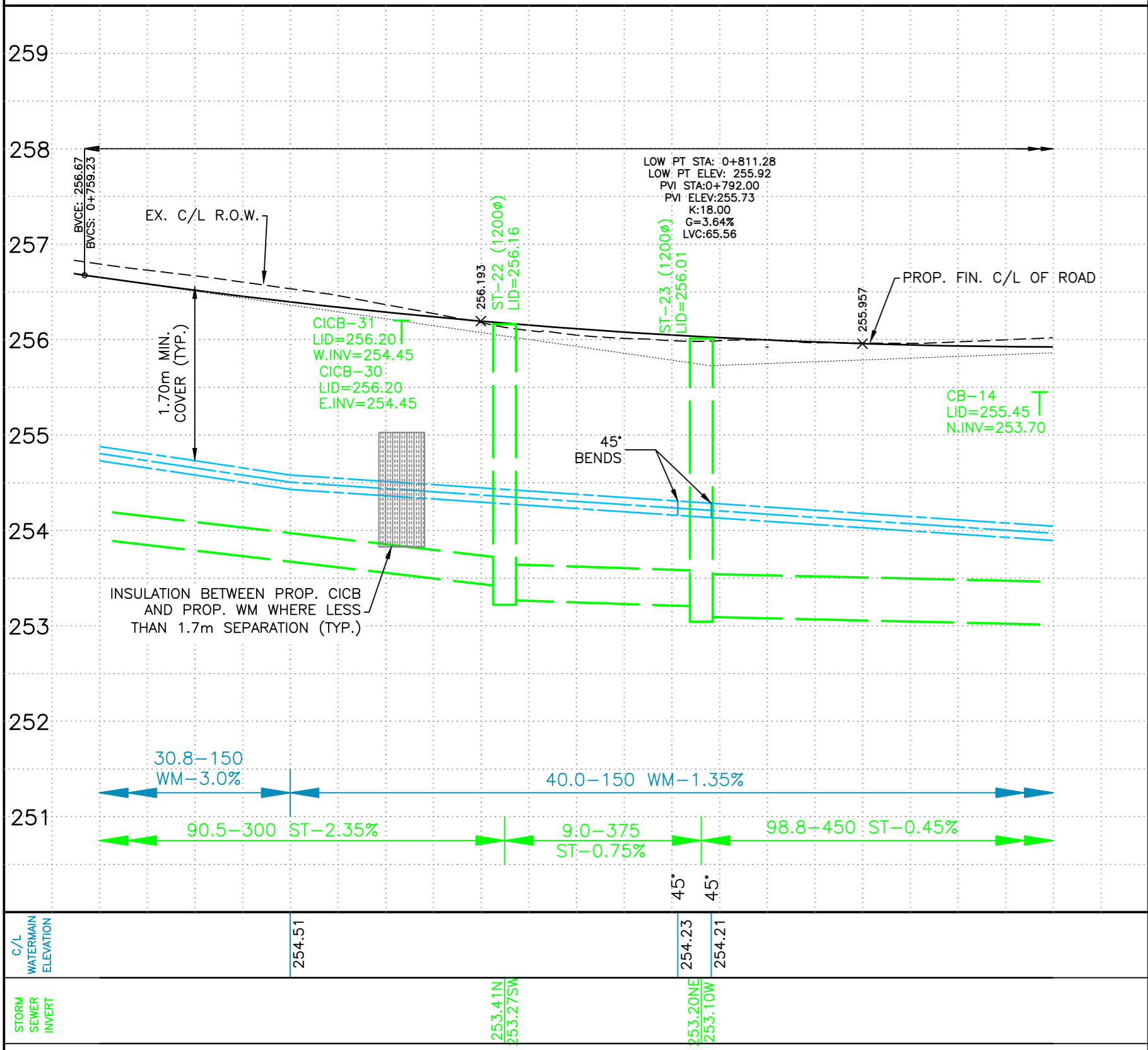




ROSS AVENUE



ROSS AVENUE



STATION	0+785.00	0+780.00	0+781.24	0+781.55	0+785.00	0+810.00
C/L WATERMAIN ELEVATION	254.51		254.23	254.21		
STORM SEWER INVERT		253.41N 253.275W	253.20N 253.10W			
SANITARY SEWER INVERT						

STATION	0+810.00	0+825.00	0+840.00	0+865.00	0+890.73	0+900.00
C/L WATERMAIN ELEVATION	254.51	253.97	254.08		253.74	253.74
STORM SEWER INVERT		253.41N 253.275W	253.20N 253.10W	252.65E 252.53N 252.28S		
SANITARY SEWER INVERT						

EXISTING SERVICES	DRAWING #, SOURCE	DATE	AS CONSTRUCTED SERVICES	COMPLETION	DETAILS	No.	REVISIONS	DATE	CONSULTANT
					DESIGN BY RAB	1	50% SUBMISSION	MAY 1/20	DEVENG
					DRAWN BY RAB	2	ECA SUBMISSION	DEC 8/20	DEVENG
					CHECKED BY JS				
					F.B.K. 1219				

CONSULTANT OR DIVISION	ENGINEER'S STAMP
London Office 41 Adelaide St. N., Unit 71 (519) 672-8310	
Paris Office 31 Mechanic St., Unit 301 (519) 442-1441	

**development engineering**  
(London) Limited  
CONSULTING CIVIL ENGINEERS

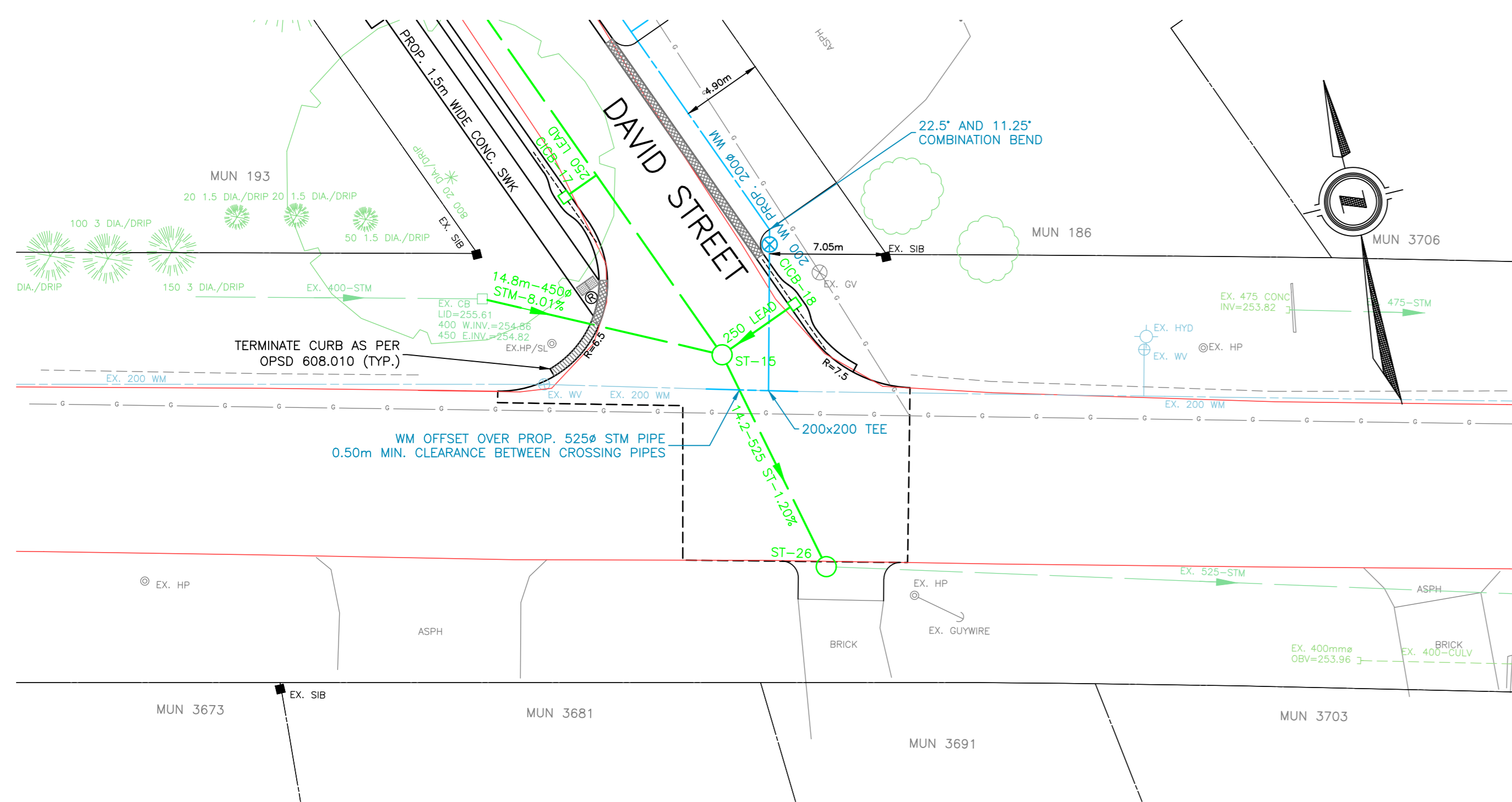
**Municipality of Thames Centre**

**PORTER SUBDIVISION**  
WATERMAIN REPLACEMENT AND ROAD RECONSTRUCTION, DORCHESTER, ON  
PROPOSED CONSTRUCTION  
ROSS AVENUE: FROM 185m EAST AND NORTH-EAST OF PATRICIA AVENUE TO PATRICIA AVENUE

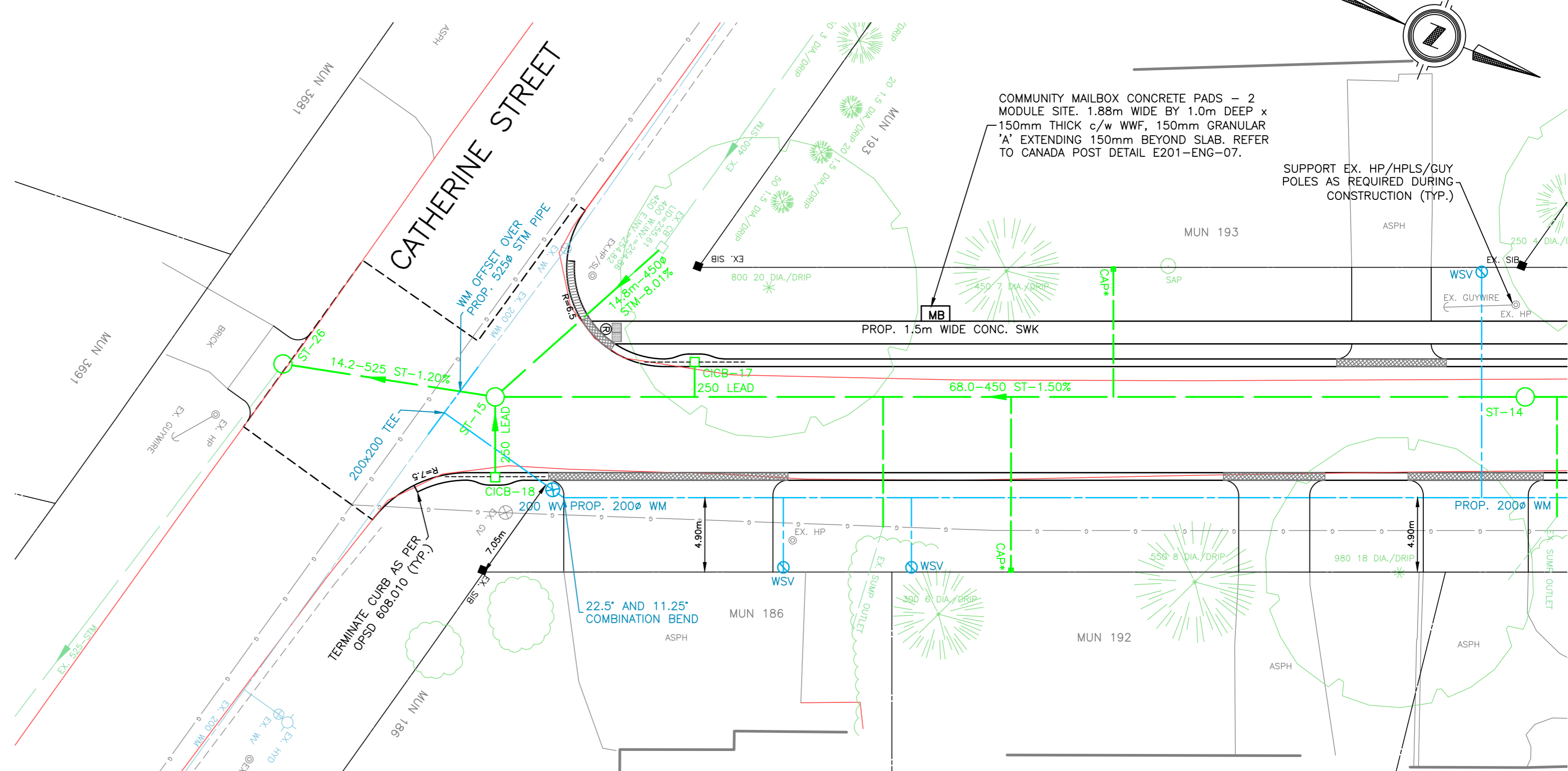
SCALE  
HORIZONTAL - 1:250  
VERTICAL - 1:50

PROJECT No. DEL20-003A  
SHEET No. 11  
PLAN FILE No.

borlett Mar22/21 P&P A PUM.dwg



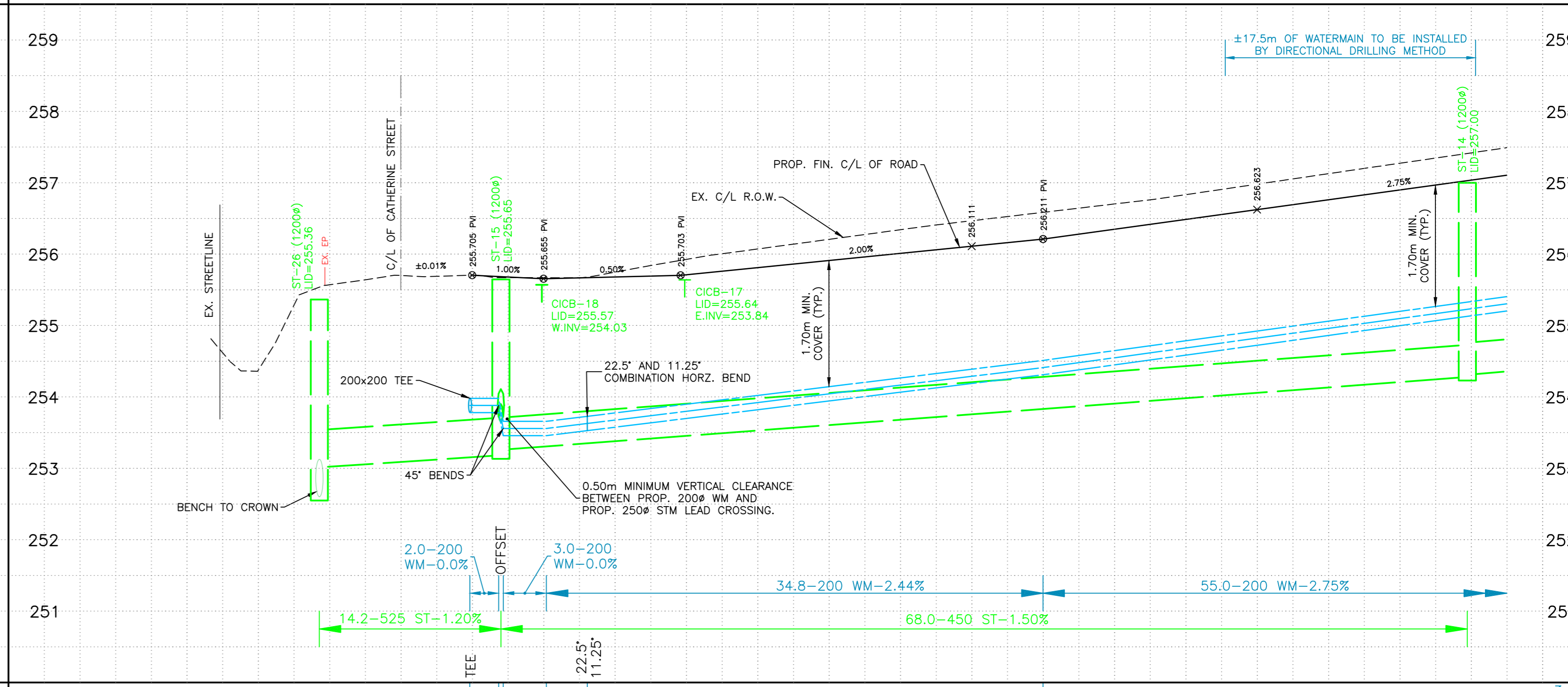
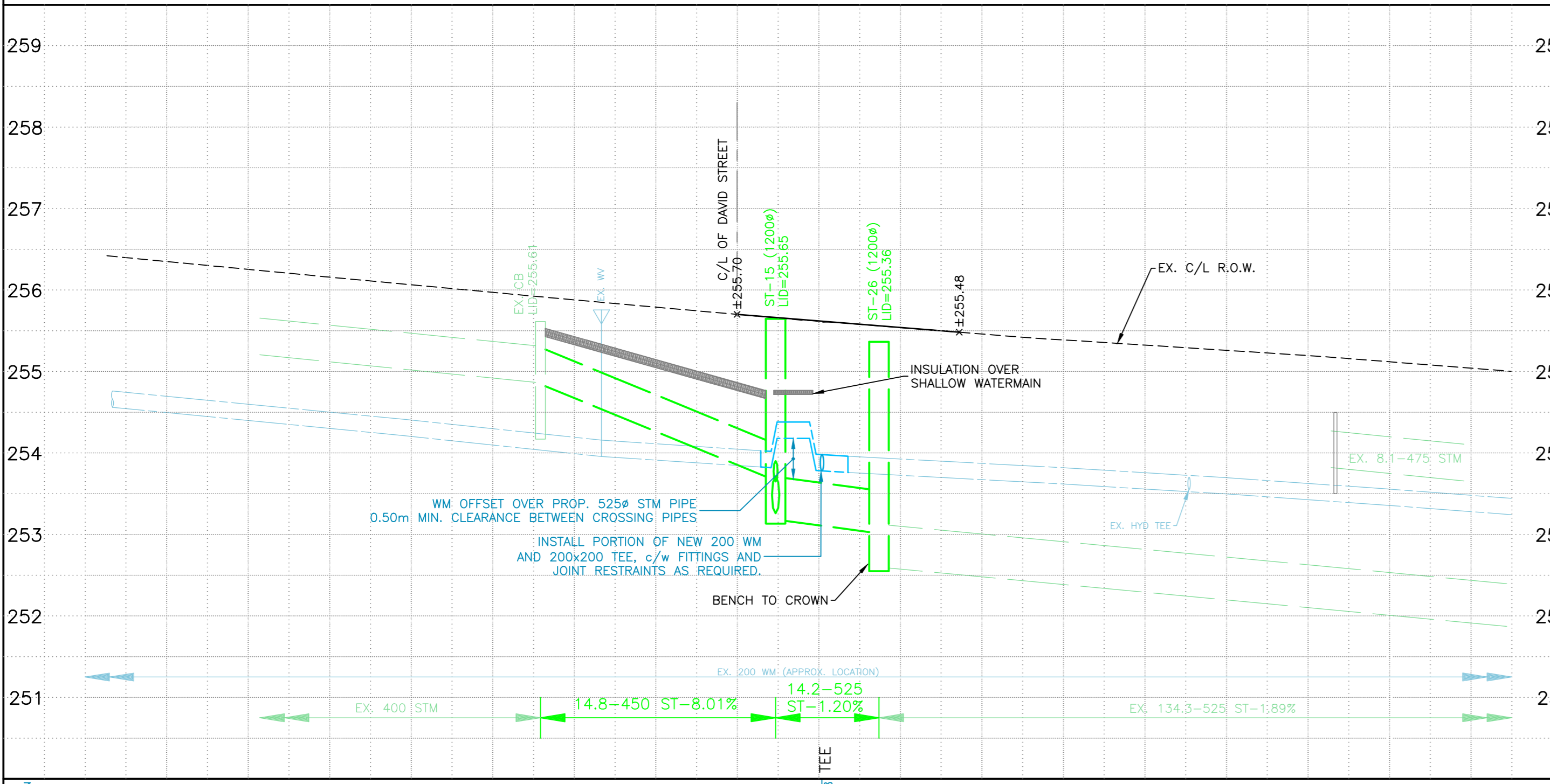
CATHERINE STREET



DAVID STREET

NOTE: REFER TO SHEET 1 FOR LEGEND AND NOTES.

SEE SHEET 13



C/L WATERMAIN ELEVATION	259	258	257	256	255	254	253	252	251
STORM SEWER INVERT	254.86V	253.26N	253.16N	253.18S	253.01N	252.80E	253.88	253.56	253.18S
SANITARY SEWER INVERT	254.82E	253.18S	253.18S	253.18S	253.01N	252.80E	253.88	253.56	253.18S

C/L WATERMAIN ELEVATION	259	258	257	256	255	254	253	252	251
STORM SEWER INVERT	254.86V	253.26N	253.16N	253.18S	253.01N	252.80E	253.88	253.56	253.18S
SANITARY SEWER INVERT	254.82E	253.18S	253.18S	253.18S	253.01N	252.80E	253.88	253.56	253.18S

STATION	0+000.00	0+012.06	0+022.00	0+002.36	0+008.70	0+022.00	0+040.00	0+015.00	0+005.71	0+002.00	0+007.01	0+015.00	0+022.00	0+025.00	0+002.00	0+025.00
---------	----------	----------	----------	----------	----------	----------	----------	----------	----------	----------	----------	----------	----------	----------	----------	----------

STATION	0+000.00	0+012.06	0+022.00	0+002.36	0+008.70	0+022.00	0+040.00	0+015.00	0+005.71	0+002.00	0+007.01	0+015.00	0+022.00	0+025.00	0+002.00	0+025.00
---------	----------	----------	----------	----------	----------	----------	----------	----------	----------	----------	----------	----------	----------	----------	----------	----------

EXISTING SERVICES	DRAWING #, SOURCE	DATE	AS CONSTRUCTED SERVICES	COMPLETION	DETAILS	No.	REVISIONS	DATE	CONSULTANT
					DESIGN BY RAB	1	50% SUBMISSION	MAY 1/20	DEVENG
					DRAWN BY RAB	2	ECA SUBMISSION	DEC 8/20	DEVENG
					CHECKED BY JS				
					F.B.K. 1219				

London Office  
41 Adelaide St. N., Unit 71  
(519) 672-8310

Paris Office  
31 Mechanic St., Unit 301  
(519) 442-1441

CONSULTING CIVIL ENGINEERS

SCALE

HORIZONTAL - 1:250  
2.5 0 5m

VERTICAL - 1:50  
0.5 0 1m

TITLE

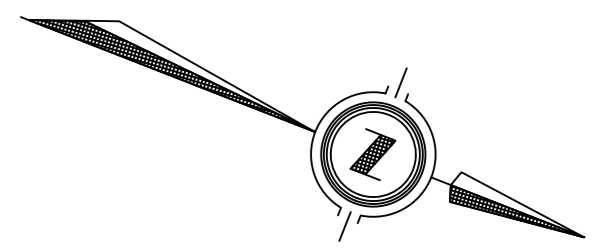
PORTER SUBDIVISION  
WATERMAIN REPLACEMENT AND ROAD  
RECONSTRUCTION, DORCHESTER, ON  
PROPOSED CONSTRUCTION  
DAVID STREET: FROM INTERSECTION OF  
CATHERINE STREET TO 75m NORTH OF  
CATHERINE STREET

PROJECT No. DEL20-003A

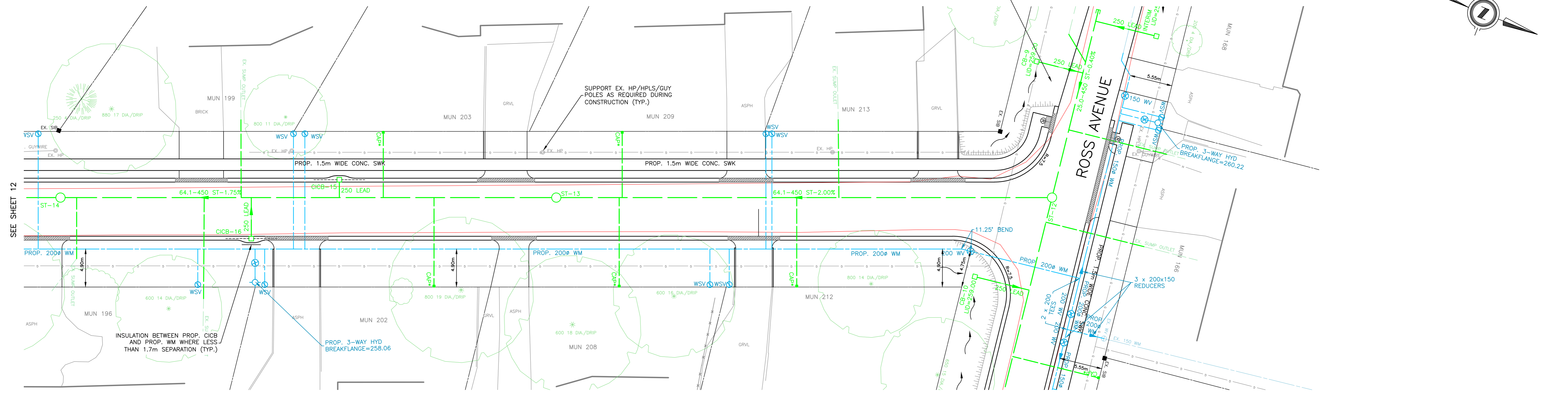
SHEET No. 12

PLAN FILE No.

2021/03/27 12:33:20m  
 DEL20-003 P&P A PUM.DWG



VARIABLE SHOULDERED BOULEVARD 2.0m MAX. WIDTH WITH 2% POSITIVE SLOPE TO ROADWAY AND 3H:1V MAX. SLOPE TO MATCH INTO EX. GROUND WITH 0.5m ROUNDING. FIELD ADJUST AS REQUIRED TO SUIT EXISTING FRONTAGES/TREES. (TYP.)

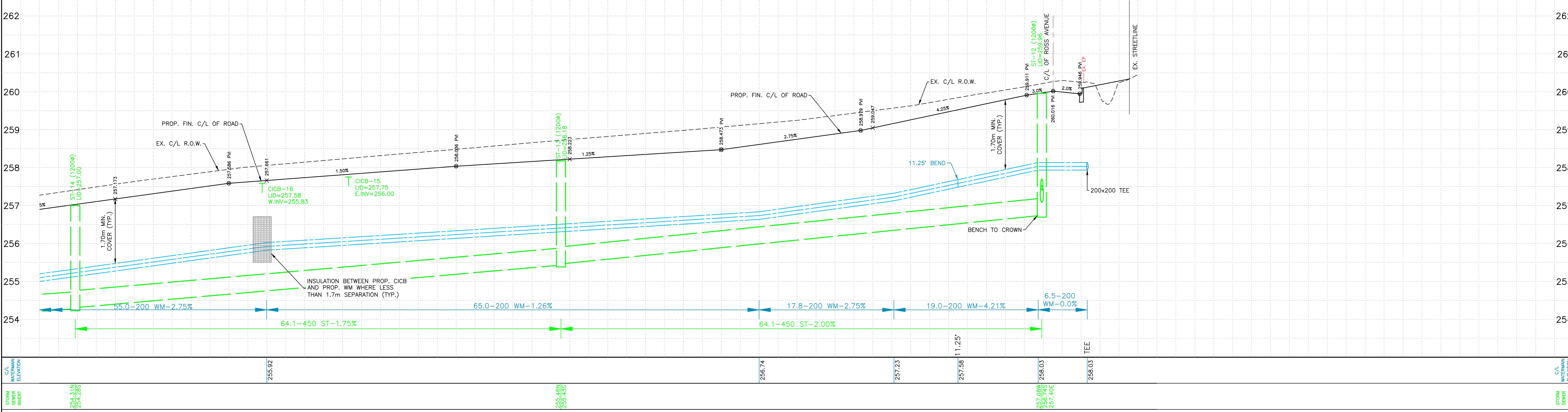


DAVID STREET

NOTE: WHERE DRIVEWAYS HAVE BACKFALL, CONSTRUCT 1.0m MIN. WIDE SHOULDER WITH 1%-2% POSITIVE SLOPE TOWARDS ROADWAY (TYP.)

SEE SHEET 9

NOTE: REFER TO SHEET 1 FOR LEGEND AND NOTES.



C/L WATERMAIN ELEVATION	255.92	256.74	257.23	257.58	258.03	258.03
STORM SEWER INVERT	254.31N 254.28S	255.46N 255.43S		257.08W 256.74S	257.40E	
SANITARY SEWER INVERT						
STATION	0+025.00	0+105.00	0+120.00	0+138.84	0+150.00	0+210.00

EXISTING SERVICES	DRAWING #, SOURCE	DATE	AS CONSTRUCTED SERVICES	COMPLETION

DETAILS	No.	REVISIONS	DATE	CONSULTANT
DESIGN BY RAB	1	50% SUBMISSION	MAY 1/20	DEVENG
DRAWN BY RAB	2	ECA SUBMISSION	DEC 8/20	DEVENG
CHECKED BY JS				
F.BK. 1219				

CONSULTANT OR DIVISION

London Office  
41 Adelaide St. N., Unit 71  
(519) 672-8310

Paris Office  
31 Mechanic St., Unit 301  
(519) 442-1441

**development engineering**  
(London) Limited  
CONSULTING CIVIL ENGINEERS

ENGINEER'S STAMP



SCALE

HORIZONTAL - 1:250  
2.5 0 5m

VERTICAL - 1:50  
0.5 0 1m

TITLE

PORTER SUBDIVISION  
WATERMAIN REPLACEMENT AND ROAD  
RECONSTRUCTION, DORCHESTER, ON

PROPOSED CONSTRUCTION  
DAVID STREET: FROM 135m SOUTH OF ROSS  
AVENUE TO ROSS AVENUE

PROJECT No.  
DEL20-003A

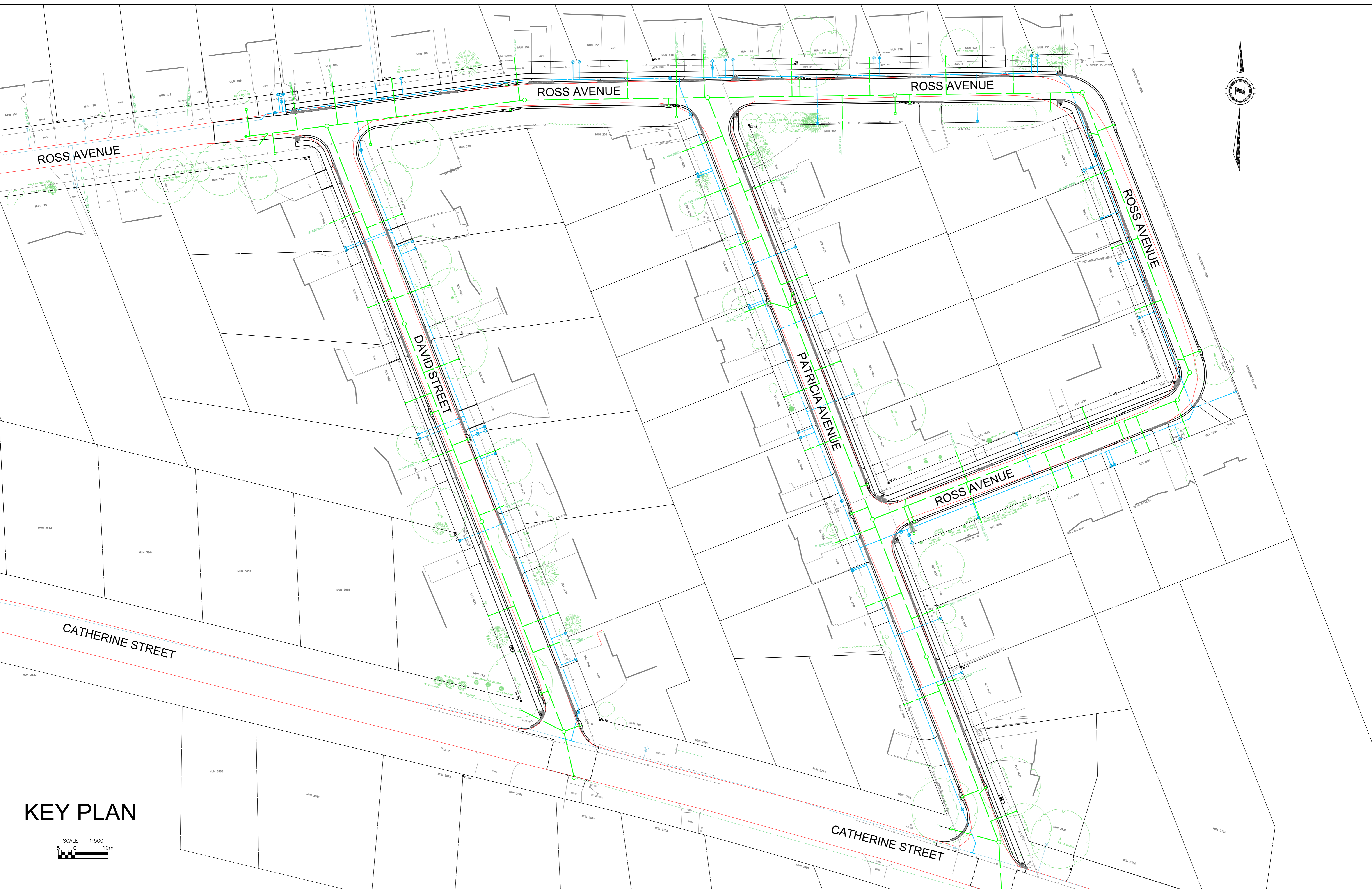
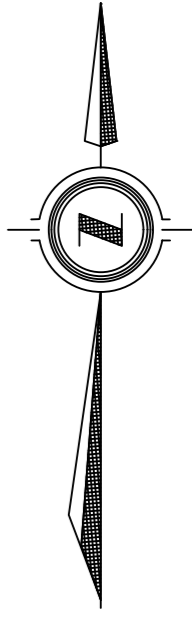
SHEET No.  
13

PLAN FILE No.

sheet: Mar27/21-3:32pm DEL20-003 P&P A PUM.dwg







# KEY PLAN

SCALE - 1:500  
0 5 10m





KEY PLAN

SCALE 1:500  
0 10m